



SCP121100 DC 31 12V 110Ah(20hr)

Rechargeable AGM Lead Acid batteries. Battery is completely sealed and is maintenance-free, leak proof, and can be used in any position. Is approved for transportation by Air, DOT, IATA, and FAA.

General Features

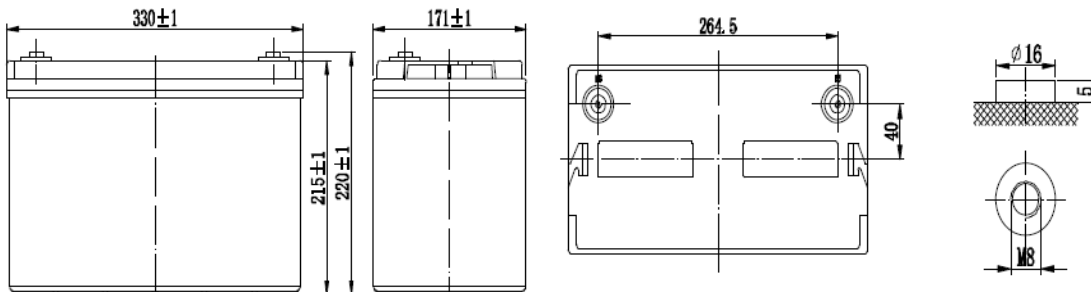
- Absorbent Glass Mat (AGM) Deep Cycle technology high cycle applications.
- Not restricted for air transportation, complies with IATA/ICAO special provision 67
- UL-recognized component
- Computer designed lead, calcium tin alloy grid for high power density
- Long service life, float or cyclic applications
- Maintenance-Free
- Low self-discharge

Dimensions and Weight

Length (mm / inch)	330/12.99
Width (mm / inch)	171/6.73
Height (mm / inch)	215/8.46
Total Height (mm / inch)	220/8.66
Aprox. Weight (kg / lbs)	30/66.1
Terminal Type/size	M8

Performance Characteristics

Nominal voltage	12
Number of cells	6
Nominal Capacity 77 ⁰ F (25 ⁰ C)	
100 hour rate	1.80V/cell 120Ahr
24 hour rate	1.80V/cell 112Ahr
10 hour rate	1.75V/cell 100Ahr
5 hour rate	1.75V/cell 87Ahr
1 hour rate	1.60V/cell 65.2Ahr
Self-Discharge	3% of capacity per month at 20 ⁰ C
Operating Temperature Range	
Discharge	-20 to +60 ⁰ C
Charge	-10 to +60 ⁰ C
Storage	-20 to +60 ⁰ C
Max Discharge Current	1000A
Short Circuit Current	3300A
Charge Methods: Constant Voltage Charge 77 ⁰ F (25 ⁰ C)	
Cycle use	2.40-2.45VPC
Maximum charging current	0.33C 20hr
Temperature compensation	-30mV/ ⁰ C
Standby use	2.26-2.30VPC
Temperature compensation	-20mV/ ⁰ C



SCP121100 DC 31 12V 110Ah(20hr)

